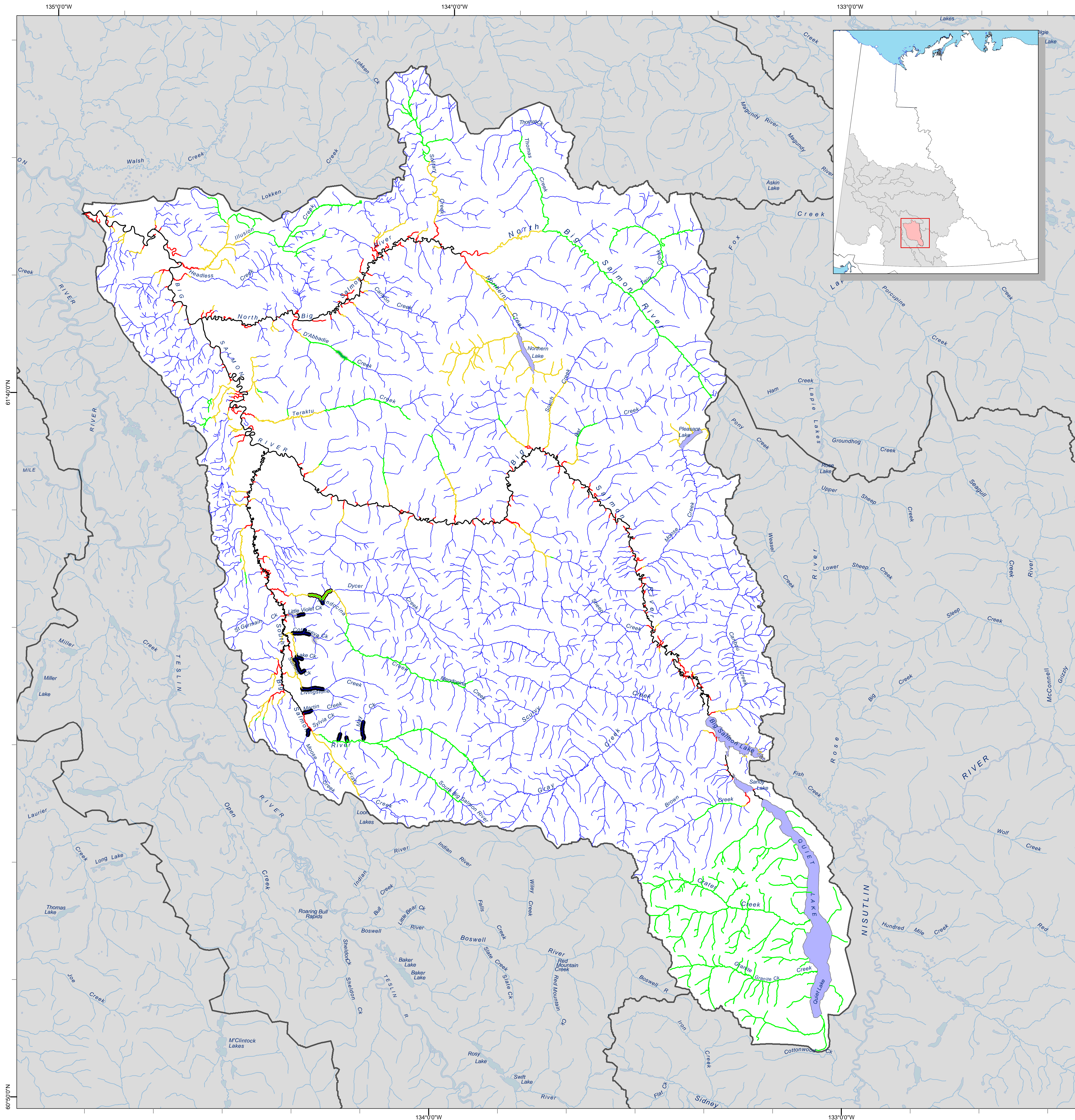


Yukon Placer Fish Habitat Suitability Map - Big Salmon River Watershed (Category A)



Reach Model Classification, Reach Score

- Water Quality
- Low Suitability
- Moderate-Low Suitability
- Moderate-Moderate Suitability
- Moderate-High Suitability
- High Suitability
- Areas of Special Consideration - Ecological
- Areas of Special Consideration - Cultural

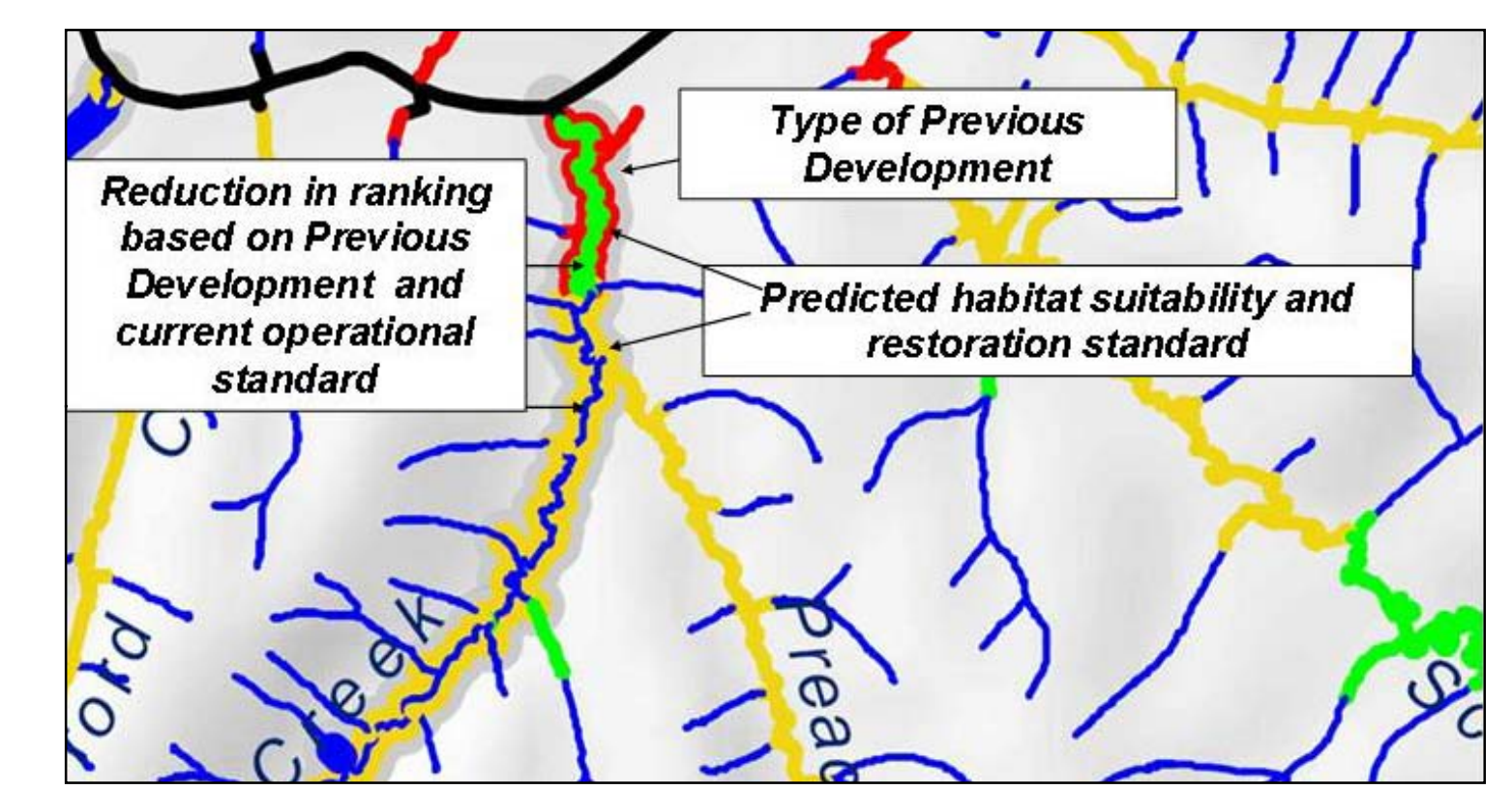
Development

- Current
- Historical
- Extensive
- Lakes

N

This map, and any associated information presented on it, is provided for illustration purposes only. Please note that the information presented or the data it is based upon, may not be current, may be incorrect, may be extrapolated or averaged from limited data sets or may be missing information. Watercourses or waterbodies not depicted on the map should not be construed as having no value for fish or fish habitat. Should a discrepancy arise between the information depicted on this map and information presented by Fisheries and Oceans Canada in the context of the applicability of an Authorization for the harmful, alteration, disruption or destruction of fish habitat, the latter will be deemed correct. The information on this map should never be used for the purposes of navigation. Some of the information presented on this map has been obtained from third parties who should be contacted to ascertain the source, description and potential usage restrictions of the information. Under no circumstances will the Government of Canada, or Yukon Government be liable to any person or business entity for any direct, indirect, special, incidental, consequential, or other damages based on any use of information contained on this map, including, without limitation, any lost profits, business interruption, or loss of information.

Revised September 2010



Previous Development Designation

In this fish habitat classification system, the suitability of fish habitat is determined by considering watercourse gradient, the proximity of streams to the routes used by Chinook salmon for spawning and migration, and water quality. This approach has proven to be effective when assessing habitat in streams not affected by human activity, but the predicted habitat features and conditions may not be present in streams already affected by placer mining.

For this reason, the Fish Habitat Management System for Yukon Placer Mining includes a "Previous Development" designation. It will adjust the classification of streams that are currently mined, or were mined in the past.

On this map a grey, black or mauve buffer surrounding a stream represents reaches that have been affected by placer mining. A grey buffer indicates current activity, a black buffer shows where placer mining occurred in the past, and a mauve buffer describes extensive development. The coloured line immediately within a buffer depicts the habitat suitability that would be predicted if mining had never occurred on the stream. The coloured line in the very centre reveals the habitat suitability ranking that will be assigned to the reach, taking the Previous Development designation into account.

It should be noted that while the Previous Development designation applies to placer mining activity on streams that may not have been properly restored, all future restoration work must achieve the standard required for the predicted (or higher) habitat suitability classification.

Areas of Special Consideration

Areas within watercourses that contain ecologically or culturally important fisheries or aquatic resources or provide significant, critical linkages to upstream habitats for fish have been designated as "Areas of Special Consideration". Reaches assigned this designation may include habitats for rare or locally significant species and/or areas which directly support subsistence, traditional, commercial or sport fisheries.

Areas of Special Consideration may be established for anadromous or non-anadromous species of fish. At a minimum, Areas of Special Consideration include spawning areas and migration routes for chum, Coho or sockeye salmon, as well as spawning areas for rainbow trout, bull trout and Dolly Varden.